



**Course Selection for:**

**Gr 10s**  
**going into**  
**Gr 11**

Things you need to know before  
picking your classes for next year.



We would like to acknowledge the traditional territories of the Coast Salish, specifically, Esquimalt Nation and Songhees Nation on which the school is built; and the nations SD62 works with Beecher Bay, Scia'new Nation, T'Sou-ke Nation, and Nuuchahnulth Pacheedaht Nation to the west. We recognize the territory and nation. We thank them for sharing this beautiful land.

Hych'ka – Coast Salish Kleco Kleco – Nuuchahnulth

[Student Acknowledgement video](#)

# All students need to have access to their MyEd Student Portal

For instructions and direct links go to the Belmont website, under “Students” tab, click “MyEd student portal”, or click here:

<https://belmont.web.sd62.bc.ca/students/myed-student-portal-information/>

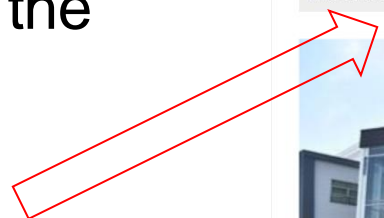
Link to MyEd login page:

<https://myeducation.gov.bc.ca/aspen/logon.do>

If you are “locked out”, send an email to

Belmont MyEd portal support [belmontmyedportalsupport@sd62.bc.ca](mailto:belmontmyedportalsupport@sd62.bc.ca)

Course selection information can be found on the Belmont Website under the “Students” tab.



<https://belmont.web.sd62.bc.ca/students/course-selection/>

École Secondaire  
**Belmont Secondary School**

District Website English  
Translation provided through Google Translate

HOME ABOUT **STUDENTS** PARENTS RESOURCES PROGRAMS COMMUNITY PARTNERS LINKS

Home / School News

**ATTENDANCE**

Please call our attendance line at 250-478-5501 and follow the prompts to leave a message or email [belmont@sd62.bc.ca](mailto:belmont@sd62.bc.ca) letting us know your child is away due to an excused absence or going to be late or leave early. We mark these as excused absences. Parents can check their student's attendance through the My Ed parent portal. If a parent has concerns please contact the teacher or your child's VP of record.

**UPCOMING EVENTS**

FEB 4 Tue	all-day Report Cards Published
FEB 8 Sat	all-day Choral Collaborations Day – BMD
FEB 11 Tue	7:00 pm PAC Meeting – Feb 11th – 7:00 pm...
FEB 13 Thu	9:00 am Film and TV Fair – Learning Comm...

**Belmont Bulletin**

December 1, 2020 / School News

The latest edition of the Belmont Bulletin has now been published. Please check it out on the link [belnw](#)

# Before you select your courses, consider:



- What classes you need to graduate high school.
- What classes would be useful /needed, to apply for jobs, enter a trade, or
- What classes apply to post-secondary programs you are interested in.

# Potential employers are looking for relevant experience.

For Example:

If you want to work in the restaurant industry, consider taking:

- Food Studies
- Baking & Decorating
- Culinary Arts



If you want to be a manager, or run your own business, consider taking:

- Entrepreneurship & Marketing
- Accounting
- Web design





# Explore Potential Careers

The career you are interested in may require you to have specific high school courses.

For example:

**NURSING: Bachelor of Science degree (BSCN) @ Camosun requires:**

1. High school graduation or equivalent
2. English 12 (73%) or equivalent
3. English 11 or equivalent
4. Meet the English Language Proficiency requirement
5. Foundations of Math 11 (73%) or equivalent
6. Biology 11/Life Sciences 11 (73%) or equivalent
7. Anatomy and Physiology 12 (73%) or equivalent
8. Chemistry 11 or equivalent
9. Chemistry 12 or equivalent
10. Social Studies 11 or equivalent
11. Approved academic Grade 12 course



Plus additional requirements (<https://www.educationplannerbc.ca/institutions/587482D5-F5F5-418A-9476-31C24C864958/programs/CAM-nursing-bachelor-of-science-degree-bsn>)

Helpful resources to explore career paths and post-secondary requirements:



<https://www.educationplannerbc.ca/>



<https://myblueprint.ca/>



<https://www.workbc.ca/plan-career/explore-careers>

More helpful resources: <https://emcs.web.sd62.bc.ca/counselling-centre/post-secondary/post-secondary-career-information/>

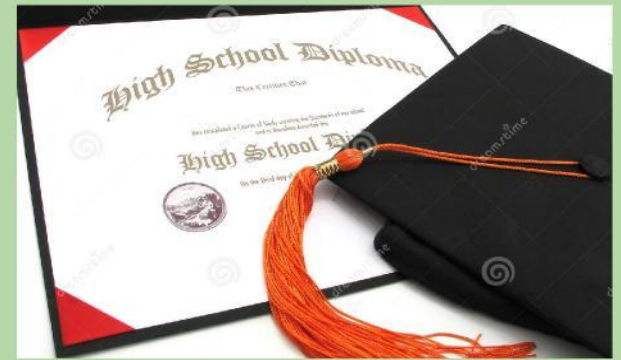


# Graduation Requirements

➤ a minimum of 80 credits total are required to graduate

## Must have:

- English 10
- Social Studies 10
- Science 10
- Math 10
- Physical & Health Education 10
- Career Life Education 10
- English 11
- a Social Studies 11 or 12
- a Science 11 or 12
- a Math 11 or 12
- English 12
- Career Life Connections 12 (Including 30 hours Career exploration, **AND** a Capstone project)
- and at least 28 Elective credits



❖ **At least one course must be** an Arts Education **OR** an Applied Design, Skills, and Technologies course

❖ **At least one course must be** an Indigenous-focused course (10-12)

# Indigenous-Focused Requirement

All students working toward a B.C. Certificate of Graduation (“Dogwood Diploma”) must successfully complete at least 4 credits in Indigenous-focused coursework.

Students can meet this graduation requirement through a variety of course options in grades 10 – 12.

Currently Belmont offers the following courses:

- English First Peoples 10
- English First Peoples 11
- English First Peoples 12
- Contemporary Indigenous Studies 12
- B.C. First Peoples 12



# **MISSING ANY GRADUATION REQUIREMENTS ?????**

If you know you are missing any of the course requirements (from grade 10), make sure you select those courses instead of new grade 11 electives.

If you are unsure - check with your counsellor!

# For Grade 11, you are required to take:

- *an English 11*
- *a Math 11*
- *a Social Studies 11 or 12*
- *a Science 11 or 12*
- *Plus 4 (or more) electives*

# English 11

Choose one of the following:



- Literary Studies 11
- Composition 11
- Creative Writing 11
- New Media 11
- English First Peoples: Literary Studies and New Media 11
- English First Peoples: Literary Studies and Writing 11 and AVID
  - Yearlong, requires an application

\*\*Check the course selection booklet for descriptions of each course.

<https://belmont.web.sd62.bc.ca/students/course-selection/>

# Math 11

Choose one of the following:

## Pre-Calculus 11

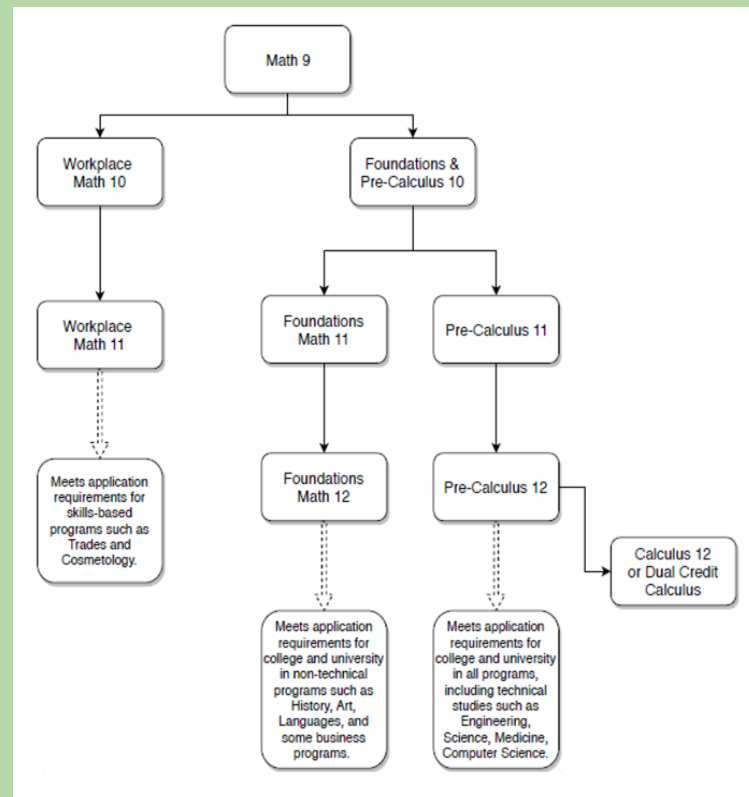
- Leads toward fulfilling the prerequisites for entry into college and university programs that require the study of theoretical calculus with a science focus (e.g. science, math, medicine, engineering, economics).

## Foundations of Math 11

- Designed to provide students with the skills needed for college and university programs that do not require the study of theoretical calculus (for example, humanities, history, languages, sociology, some business programs).
- Continues from Foundations and Pre-Calculus 10 but focuses on different math skills than Pre-Calculus 11.

## Workplace Math 11

- students learn understanding and critical-thinking skills identified for basic graduation requirements and direct entry into the workforce.
- Meets requirements for entrance into Trade and Certificate post-secondary programs





# Science

Choose one (or more) of the following:

- Chemistry 11
- Environmental Science 11
- Life Sciences 11
- Physics 11
- Science for Citizens 11 (meets grad requirements, but not post-secondary admissions requirements)
- Marine Life Sciences 11 & Aquatic Chemistry 11 (Cohort Program, 2 blocks in 2nd semester)



**\*\*\* Research the admission requirements for your chosen post-secondary institution \*\*\***

Check course selection booklet for descriptions: <https://belmont.web.sd62.bc.ca/students/course-selection/>

# Social Studies

Choose at least one (or more)

The following courses satisfy Provincial Graduation requirements for Social Studies 11 or 12, and are offered to students in Grades 11 and/or 12.

- Explorations in Social Studies 11 – Modern Europe
- 20th Century World History 12
- 20th Century World History 12: World Wars
- Comparative World Religions 12
- Contemporary Indigenous Studies 12 (also satisfies the Indigenous-focused course requirement)
- BC First Peoples 12 (also satisfies the Indigenous-focused course requirement)
- Law Studies 12
- Physical Geography 12
- Social Justice 12

If your path is through post secondary schooling, it's important to consider admissions requirements during course selection for grade 11 or 12 courses:

For example: (\*check the specific program website to be certain)

- UVic - generally need English 12 + 3 approved academics
- UBC - generally need English 12 + 5 approved academics
- SFU – generally need English 12 + 5 approved academics
- Ontario Universities - generally need English 12 + 6 approved academics

Some approved grade 12 academics offered at Belmont:

- 20<sup>th</sup> Century World History
- Anatomy & Physiology 12
- BC First Peoples 12
- Calculus 12
- Chemistry 12
- Comparative World Religions 12
- Contemporary Indigenous Studies 12
- Foundations of Math 12
- French, Spanish, or Japanese 12
- Geography 12
- Law 12
- Physics 12
- Social Justice 12

\*\*\*\*\* SEE your counsellor or CC to determines what “approved” means for each schools

# Electives

**All students will select 4 Electives PLUS 2 Alternative choices**

At least one must be either an “Arts Education”, or an “Applied Design, Skills, and Technology” course.

You can also choose to take another science or social studies course as an elective.

**What you choose may depend on what career path / post-secondary program you are interested in - DO SOME RESEARCH and talk to your counsellor or teachers.**

There are a multitude of elective options available at Belmont. Please see the course selection booklet for course names and descriptions.

<https://belmont.web.sd62.bc.ca/students/course-selection/>

# Maybe you want to go into the trades?

There are work experience and college programs available for trades training that may require specific grade 10 prerequisites.

**Visit the Career Center** (next to the main office) for more information.



# Visit the Career Centre (next to the main office)

The Career Centre helps students wishing to pursue training and experience in advanced trades and career training. Each program has certain prerequisites, so make talk with the Career Advisors to learn the options available to you.

- Camosun College South Island Partnership – Dual Credit courses
- Skilled Trades BC (Apprenticeship Training)
- TASK - [Trades Awareness Skills Knowledge](#)
  - Auto TASK @ Belmont (Semester 1) – Applications available in the Spring from the Career Centre.
  - Construction TASK @ Royal Bay Secondary School (semester 1 or 2)
  - Metal TASK @ Edward Milne Community School



ARE YOU INTERESTED IN  
WORK EXPERIENCE OR  
THE TASK PROGRAM?



## Work Experience 12A and 12B (outside the timetable)

- Work Experience 12A and 12B courses are offered to students in Grade 11 and 12
- A minimum of 100 hours of school-approved work experience is required for each course. (yes, you can use the job you already have)
- **Must have Career Life Education 10 completed before you can start WEx 12A.**
- Students can register during course selection, or in the Career Centre throughout the year
- **An orientation must be completed prior to accumulation hours.**

## Students must complete three Provincial Graduation Assessments:

- Grade 10 Literacy Assessment
- Grade 10 Numeracy Assessment
- Grade 12 Literacy Assessment.

There are no Grade 11 assessments, but if you missed one, or would like to retake any, please let your counselor know.

You will be scheduled to take it sometime during your grade 11 year.

- November, January, April, or June

# Online Learning @ Belmont

Online courses are designed for self-study, which means you go through the course at your own pace with the support of a teacher.

This is ideal for learners who wish to take responsibility for establishing their own timelines and require flexible learning.



Many course options available for:

- PHE 10
- English 10, 11, and 12
- Math 10, 11, and 12
- Science 10, 11, and 12
- Social Studies 10, 11, and 12
- Career Education 10 and 12
- and other elective options

<b>Pro's</b>	<b>Con's</b>
<ul style="list-style-type: none"><li>• Work at own pace</li><li>• Work at school or from home</li><li>• Makes space for in-person electives, or post-secondary requirements</li><li>• Fewer in-school distractions</li><li>• Enhances digital literacy</li></ul>	<ul style="list-style-type: none"><li>• Requires self motivation and time management</li><li>• Less immediate assistance with questions</li><li>• Distractions and procrastination often increases</li><li>• Out of school distractions</li><li>• Less social interactions</li></ul>



**Sooke School District**  
Academy Programs

For Registration Information

Contact:

Sandra Robinson

[smrobinson@sd62.bc.ca](mailto:smrobinson@sd62.bc.ca)

250-391-9006

[www.sd62.bc.ca/programs-services/academies](http://www.sd62.bc.ca/programs-services/academies)



### Golf

- Learn to Play Golf Academy — Grades 6-12 All schools in SD 62 All levels, after school program
- Learn to Compete Golf Academy — Royal Bay Secondary Gr 9-12 Playing experience necessary



### Baseball/ Softball

- Belmont Gr 9-12
- EMCS Softball Gr 9-12



### Equine

- District: All levels welcome Gr 7-12 after school program
- Belmont: All levels welcome Gr 9-12 in school program



### Dance

- Dunsmuir Gr 6-8
- Royal Bay Gr 9-12



### Climbing Academy

- Belmont School & Boulder House Climbing Facility
- Belmont Gr 9-12



### Mountain Biking Academy

- This academy will run in second semester in the 2 afternoon blocks at Jordie Lunn Bike Park
- Royal Bay, Belmont Gr 9-12



### New Middle School Field Lacrosse Academy

- Starting April 2024
- Open to all students in Grades 6,7,8



### Boys & Girls Field Lacrosse

- These are separate programs**
- Royal Bay Gr 9-12



### Soccer

- Dunsmuir Gr 7-8
- Royal Bay Gr 9-12
- EMCS Gr 9-12



### Hockey

- Spencer & Journey Gr 6-8
- EMCS & Belmont Gr 9-12



### Eco-Community Academy

- EMCS Gr 9/10 only



### PACE Musical Theatre Academy

- Open to all SD62 schools K-12
- No experience necessary
- Open to any students who possess passion and enthusiasm for performing in the areas of acting, singing, and dancing
- Meeting times usually Sunday between 1-5pm

**Spaces are limited so early registration is important!**

# Select your courses online through your MyEd student portal

**Course selection window open from Feb 9-26<sup>th</sup>.**

Click this link for instructions on how to log into your MyEd student portal, and make your course selection requests for next school year.

<https://belmont.web.sd62.bc.ca/students/course-selection/>

You can make changes to your course request until February 26th.



# When in MyEd searching for classes, please note...

Click ">" to go to next page on the list of classes.

Select	CourseNumber	CourseDescription	Academic level	Credit	Prerequisite	Status	
<input type="checkbox"/>	MEVSC11	ENVIRONMENTAL SCIENCE 11	Regular	4.0			
<input type="checkbox"/>	MEPSS11ME	EXPLORATIONS IN SOCIAL STUDIES 11: MODERN EUROPE	Regular	4.0			
<input type="checkbox"/>	YHEC-1AFAS	FASHION DESIGN AND CONSTRUCTION 11	Regular	4.0			
<input type="checkbox"/>	MDFT-11	FILM AND TELEVISION 11	Regular	4.0			
<input type="checkbox"/>	MFTCD11	FITNESS AND CONDITIONING 11	Regular	4.0			
<input type="checkbox"/>	MFTCD11AT	FITNESS AND CONDITIONING 11: ATHLETE TRAINING	Regular	4.0			
<input type="checkbox"/>	MFOOD11	FOOD STUDIES 11	Regular	4.0			
<input type="checkbox"/>	MFR--10	FRENCH 10	Regular	4.0			
<input type="checkbox"/>	MFR--11	FRENCH 11	Regular	4.0			
<input type="checkbox"/>	YCCT-1CVGC	GAME DESIGN 11 (GAME CREATION)	Regular	4.0			

4 of 72 selected

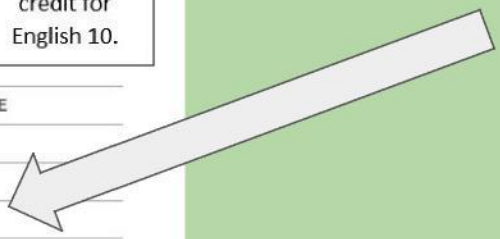
OK Cancel

Hold cursor over the right border to activate a slide bar to see more classes on current page

SeqNo	CourseNumber	CourseDescription
10	MCTWR10	CREATIVE WRITING 10 (OPTION B)
20	MLTST10	LITERARY STUDIES 10 (OPTION A)
30	MLTST10ISP	LITERARY STUDIES 10: ISP FOR ELL STUDENTS
40	MFMP-10	FOUNDATIONS OF MATH AND PRE-CALCULUS 10
50	MWPM-10	WORKPLACE MATHEMATICS 10
60	MSC--10	SCIENCE 10
70	MSS--10	SOCIAL STUDIES 10
80	MPHED10	PHYSICAL AND HEALTH EDUCATION 10
90	MPHED10AL	PHYSICAL AND HEALTH EDUCATION 10: ACTIVE LIVING
100	MCMP510HOL	COMPOSITION 10: ONLINE
110	MCTWR10HOL	CREATIVE WRITING 10: ONLINE
120	MEFLS10HOL	EFP LITERARY STUDIES 10: ONLINE
130	MEFWR10HOL	EFP WRITING 10: ONLINE
140	MLTST10HOL	LITERARY STUDIES 10: ONLINE
150	MNMD-10HOL	NEW MEDIA 10: ONLINE
160	MSPLG10HOL	SPOKEN LANGUAGE 10: ONLINE
170	MFMP-10HOL	FOUNDATIONS OF MATH & PRE-CALCULUS 10: ONLINE
180	MWPM-10HOL	WORKPLACE MATHEMATICS 10: ONLINE
190	MSC--10HOL	SCIENCE 10 ONLINE
200	MSS--10HOL	SOCIAL STUDIES 10: ONLINE
210	MPHED10HOL	PHYSICAL AND HEALTH EDUCATION 10: ONLINE
220	MCLE-10HOL	CAREER LIFE EDUCATION 10: ONLINE

For English 10  
**must pick 2**  
 online classes  
 to get full  
 credit for  
 English 10.

If you would like to choose an online version of a course, you must select the one with “online” after the course name.



**Summer 2025  
coming soon.**

SD62  
Learning  
Summer Learning  
2024  
Belmont Secondary School

**Registration free of charge for:**

- SD62 students entering grade 10-12 in Sept 2024
- current & recent grade 12 students who live within SD62
- recently graduated students (Math/Science/English only)

**ISP Students - contact ISP office for fee information**

**Benefits of Summer Learning:**

- creates flexibility in your Sept-June schedule allowing more room for electives
- supports possible early graduation
- allows for focused learning in 1 or 2 subjects
- opportunity to improve course mark or GPA
- fewer people in the building creates a 'small school' environment that many students enjoy

**CLASS SCHEDULE \***

**MORNING: 9AM - 11:30AM**

SCIENCE 10  
SOCIAL STUDIES 10  
PRE-CALCULUS MATH 11  
FIRST PEOPLES ENGLISH 11  
PRE-CALCULUS MATH 12  
FIRST PEOPLES ENGLISH 12

**AFTERNOON: 12PM - 2:30PM**

ENGLISH 10  
FOUNDATIONS & PRE-CALCULUS 10  
LIFE SCIENCES 11  
WORKPLACE MATH 11  
ENGLISH STUDIES 12  
SOCIAL JUSTICE 12  
BC FIRST PEOPLES 12

**\*All classes are offered subject to enrolment. Classes with insufficient enrolment will be cancelled and students will be offered the chance to select an alternate course.**

**Register Online: <https://sd62online.web.sd62.bc.ca>**  
**phone: 250-391-9002    email: [online@sd62.bc.ca](mailto:online@sd62.bc.ca)**

Summer Session is a great way to:

- get caught up on missing grad requirements
  - take a class or two off your plate during the regular school year
  - focus on a class that needs more attention
- 
- Classes are in-person at Belmont Secondary
  - 1 month - July to August (Monday to Friday)
  - Some courses are offered in the morning, others in the afternoon
  - Can take 1 or 2 courses (AM and/or PM)
  - No cost
  - Register early to secure your spot
  - Course offerings are subject to sufficient enrollment

## **Grade 10 Student Learning Survey**

Every year, the Grade 10 and 12 students complete a survey that gives the school, district, and Ministry of Education very important information about your school experience!

Please take the time to read and consider the questions. We do read the responses for each one and appreciate your input – this can help make changes for your Gr 11 and 12 years!



# Any questions:

➤ **Check in with your school counselor**

<https://belmont.web.sd62.bc.ca/resources/counselling/>

Students with last names	Counsellor	Email
A to E	Todd Robertson	<a href="mailto:TRobertson@sd62.bc.ca">TRobertson@sd62.bc.ca</a>
F to L	Michele Kiefert	<a href="mailto:mkiefert@sd62.bc.ca">mkiefert@sd62.bc.ca</a>
M to P	Ryan Lieser	<a href="mailto:rliester@sd62.bc.ca">rliester@sd62.bc.ca</a>
O to Z	Rachael Sandberg	<a href="mailto:rsandberg@sd62.bc.ca">rsandberg@sd62.bc.ca</a>